



Release 1.6.0. Grizzly



Release 1.6.0. Grizzly

New software update provides better images and new features for MANUS IV – tailored for ODM customers in the ultrasound market.

Ingress:

AUROTECH ultrasound AS is now launching a major update of MANUS specifically developed for existing and new customers. The update introduces several new features and an improved user experience.

Background:

The need for accuracy and reliability in the ultrasound market has never been bigger. AUROTECH ultrasound AS presents this update who meets the specific requirements in this segment. The update is based on feedback from users and the latest technological trends in the tech industry.

News:

- **Improved Image quality**
The update contains improved resolution and image quality in the near field. 2x improved image quality in the near field. AUROTECH ultrasound AS has achieved this with features including coded transmission pulses, improved transitions between focal zones, better phased array imaging, adaptive clutter filters, and functions for suppression of flashing in CFM.
- **AFI (AUROTECH flow imaging) - Chargeable option feature**
With the new functionality make it possible to watch bloodstream in the ultrasound picture

AFI (AUROTECH flow imaging) explained:

With AFI (AUROTECH flow imaging) you can now see the movement of the blood stream in the ultrasound picture. This is an expansion of Color Flow who makes visualization of complex flow hemodynamic possible. Compared to Color Flow you can see a much more detailed picture of small blood vessels. This can for example make it possible to see clusters of small blood vessels encircling a growing tumor that needs oxygen and nutrients to survive.

AFI (AUROTECH flow imaging) can be activated as an optional extra.

- **Probe test**

By activating “run probetest” in OptiTool, the program views an illustration of all transducers in the probe. You can easily detect failure or missing signal.

Why probetest?

FDA (U.S. Food & drug administration) recommends use of transducer check in “Guidance for Industry and Food and Drug Administration Staff”.

AUROTECH AS delivers quality at every level and meets the requirements and recommendations in the industry.

MANUS IV is a versatile product with many features and customization options that make it possible.

Probetest in use

The user gets this information in number values and presents the test result in their own way in the commerce product. For example, “probe ok” or “probe fail Element no. 32 damaged”

Feedback from test user:

The new release of 1.6.0. Grizzly has made it possible to see the blood flow in a blood vein.

How to update:

The new release can be distributed to customers with the MANUS ultrasound scanner. To ensure a smooth transition it is recommended to:

- Follow the instructions that come with the update
- Load file ManusPcSoftware new version
- Upgrade firmware in OptiTool

Summary:

AUROTECH latest update of MANUS offer users in the ultrasound marked a more powerful, secure, and versatile tool. The update is available from 2025/12/18

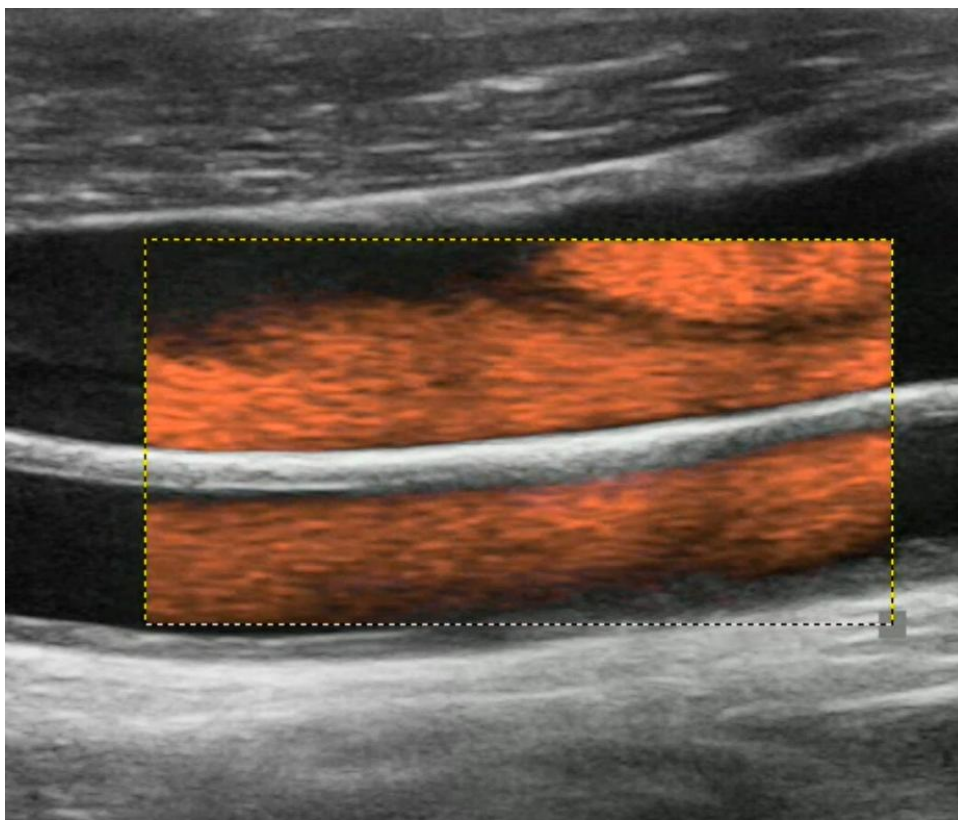
Image overview:

Screenshot 1: AFI (AUROTECH flow imaging) Carotis

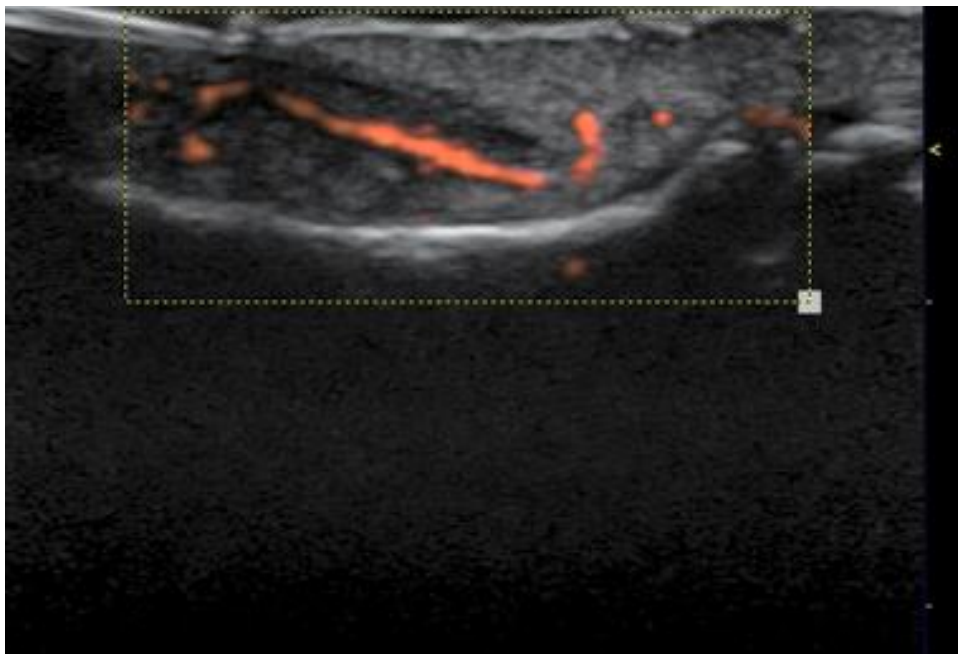
Screenshot 2: AFI (AUROTECH flow imaging) Nailbed

Screenshot 3: Probetest

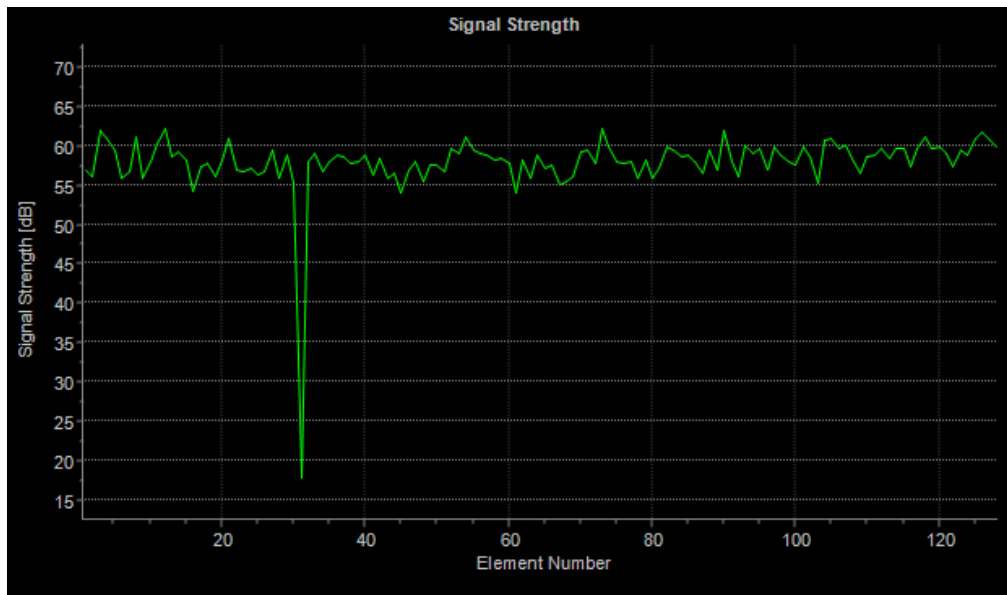
Screenshot 4: Description of files in specific folder



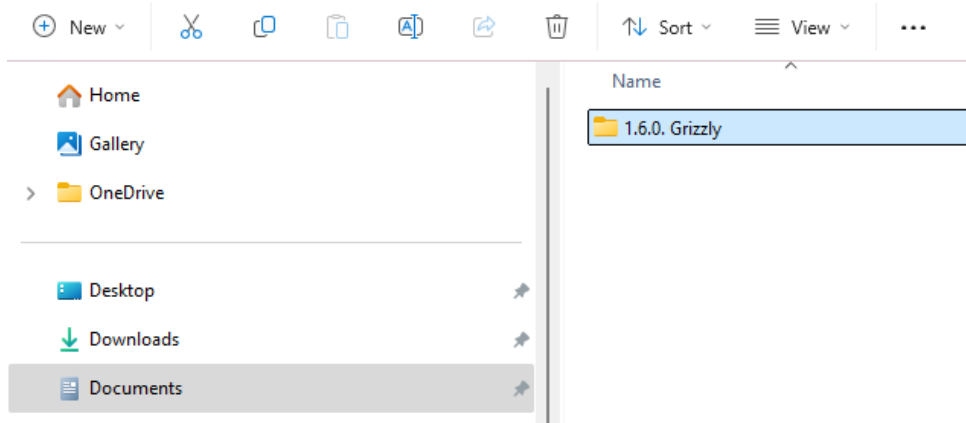
Screenshot 1: Carotis imaging with AFI



Screenshot 2: One single blood vein in fingertip located straight under nail. Size: 0,5mm visible bloodstream



Screenshot 3 of probetest in OptiTool. In the image you can clearly see one element with reduced function



*Screenshot 4
Description of files in specific folder*

Video:

Video sequence of AFI as supplement are available at our official web page www.aurotech.no and LinkedIn company profile.